



Silt Stop® Applications

Silt Stop® powder application creates a permeable soil surface that holds seeds, mulch and fertilizer in place through wind and rain events allowing establishment of the vegetation with improved growth characteristics and less maintenance. Powder or Emulsion can be added directly to Hydro seed mix and applied in one simple step.

The permeability of the surface allows 30% of run-off water to penetrate into the soil decreasing run-off velocity and reducing erosion.

Use of fertilizers can be dramatically reduced because the nutrients are held in place through wind and rain events, this reduces the need for reapplication and of seed and/or fertilizer, further off-setting the cost of the project.

By integrating the polymer through multiple steps costs can be cut, efficiency increased, and results can be seen. By using the Silt Stop® powder as a tackifying agent in the demucking of a pond the removed sediment can be resold as value-added tackified soil and used as topsoil with great revegetation characteristics.



Silt Stop® Specifications

Property	Value
Appearance	granular white powder
Bulk Density	40-50 lbs/ft ³ (0.64-0.80 kg/L)
% Moisture	maximum 15%
pH 0.5% solution	pH 6 to pH 8
Shelf life†	5 years
Sold as	50 lb bag (22.5 kg bag)



†do not store in moist or humid conditions or in direct sunlight

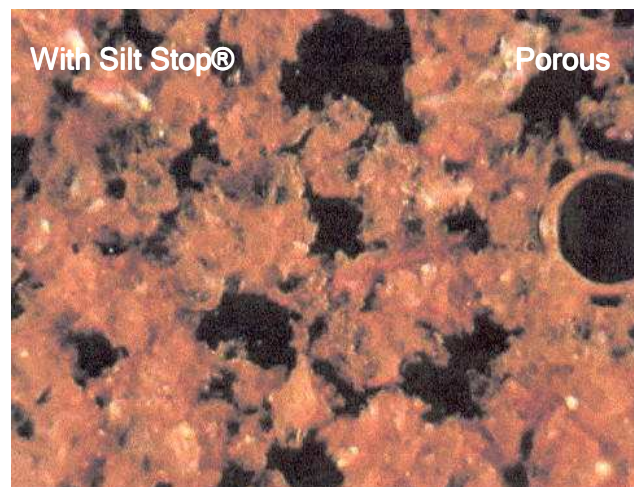
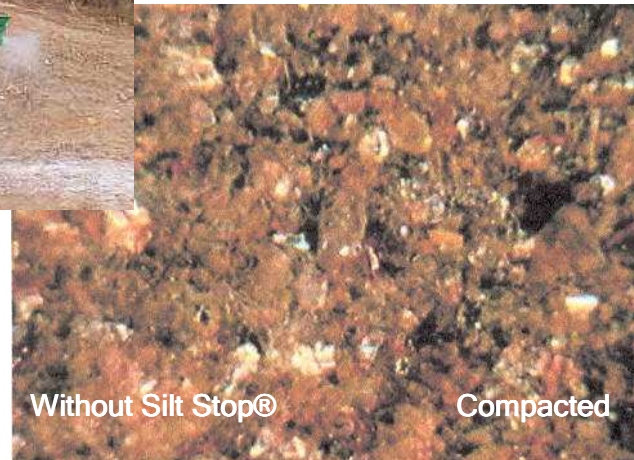
Silt Stop® Coverage

Application	Powder	Emulsion
Soil Stabilization	use following amount per acre	
Hydroseed Application	following amount per 3,000 gal. (11,300 L) water applied at 3,000 gal. (11,300 L) total mix per acre	
<i>Gentle to Moderate Slopes (flat to 4:1, 0-25%)</i>		
High Clay Content	10-20 Lbs (4.5-9 kg)	1.5-2.0 gal. (5.7-7.5 L)
High Sand Content	15-20 Lbs (7-9 kg)	1.5-2.0 gal. (5.7-7.5 L)
<i>Steep Slopes (3:1 to 1:1, 33-100%) †</i>		
High Clay Content	20-35 Lbs (9-16 kg)	1.5-2.5 gal. (5.7-9.5 L)
High Sand Content	25-50 Lbs (11-22.5 kg)	2.0-2.5 gal. (7.5-9.5 L)
Dust Control*		
per 2 acres or 1.65 miles (2.6 km) of road	50 lb (22.5 kg) per 5,500 gal. (20,820 L) tanker truck	2.5 gal. (9.5 L) per 5,500 gal. (20,820 L) tanker truck
Mud Sediment Removal	50 Lbs (23 kg) per 100 cubic yards (75 cubic meters)	N/A

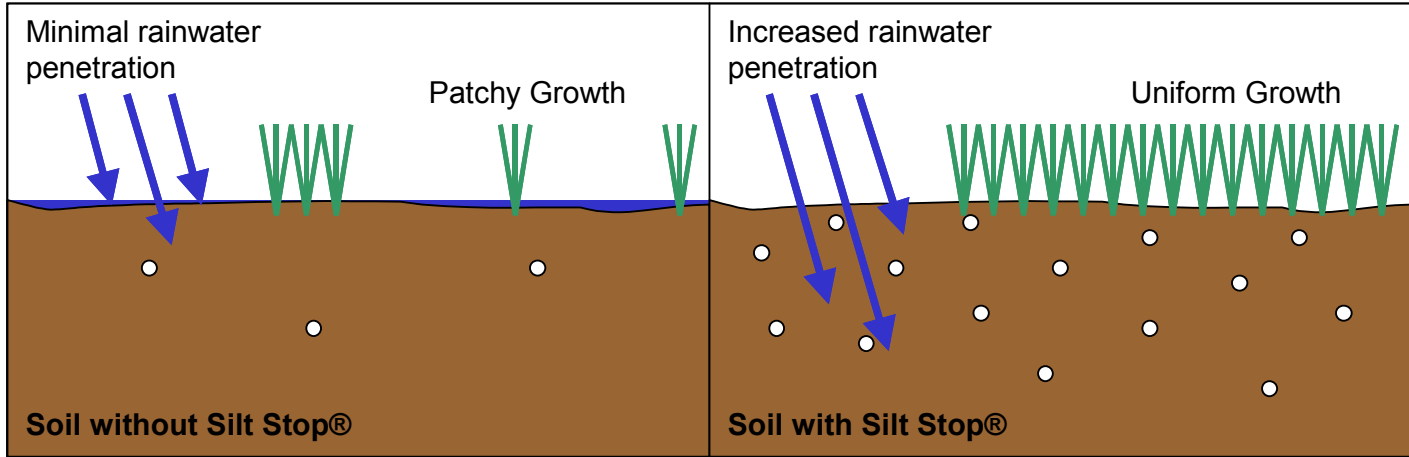
†to be used with natural-fiber matting such as jute for soil stabilization

*ensuring uniform application, based on 10 foot (3 m) wide roadway

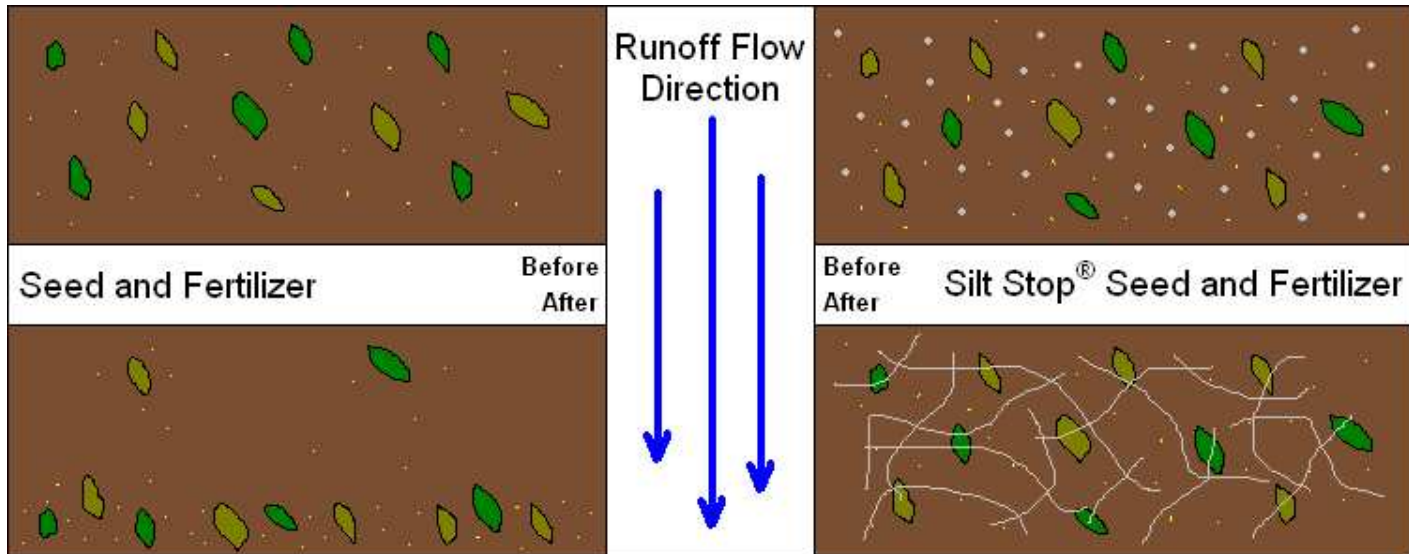
Silt Stop Emulsion should never be applied to stormwater runoff or riparian waters



Silt Stop® Applications



Silt Stop® powder can be added to the soil as a tackifier and as a way to create porosity. The powder absorbs water ballooning in size, when the soil dries the polymer releases the water adding moisture and leaving vacant spaces suitable for air and water; great for vegetation. Without porous soil, water pools and seeds can relocate or vegetation can die from insufficient aeration.



Silt Stop works as a “glue” between soil, nutrients and seed by creating a fibrous network of polymer chains. This prevents erosion of a soil layer and the loss of seed or nutrients from site. Silt Stop® can also be tilled into the soil to create uniform porosity allowing water penetration through soil layers.

Silt Stop® can be layered with soil and seed to hold the seed in place through rain and wind events allowing the vegetation to germinate and establish itself in a uniform manner.

Competitive products with the one-size-fits-all tag frequently require more product than the initial estimate to compensate for imperfect soil matching. At Clear Flow Consulting we test the soil sample to properly match our product to your soil. The result is a perfectly matched product eliminating inaccurate estimates and project cost over-runs.

Using the wrong form of a PAM on a soil will result in performance failure. PAM used alone may not reduce NTU values enough resulting in non-compliance water quality discharges or poor soil binding conditions. Site-specific soil-PAM testing must be performed. Exceeding the maximum application rates for this product does not increase the effectiveness of the product. Prior to the start of construction, a qualified professional should design the application of PAM and plans and specifications should be available to field personnel. PAM alone may not meet testing requirements for NTU reduction and soil stabilization. Site specific “blends” may be needed to meet these requirements. Failure to prepare and use a maintenance plan may result in PAM performance failure. Clear Flow Consulting only uses environmentally friendly products. Silt Stop® is a trademark of Applied Polymer Systems, Inc.